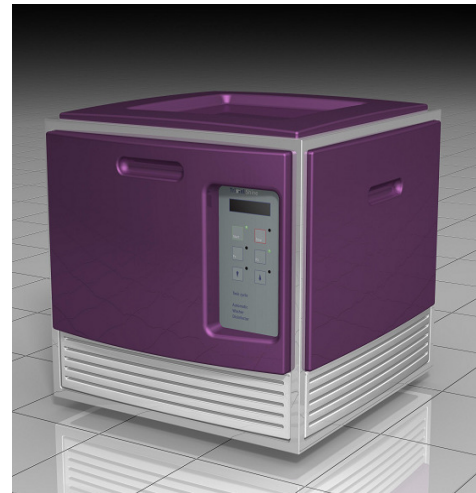


Tristel Shine

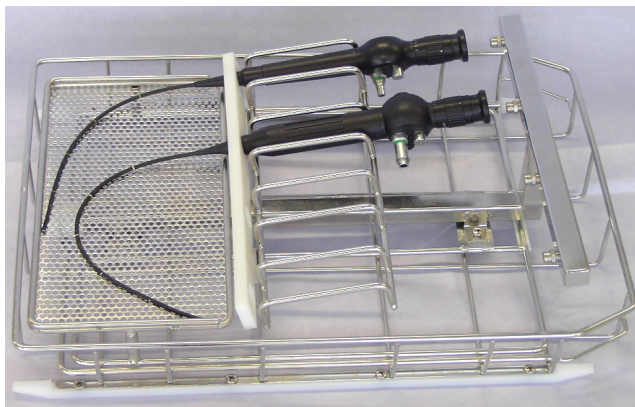
A cost-effective, technically advanced, HTM compliant, benchtop automated Washer Disinfector. Designed for non-lumened nasendoscopes for ENT Departments.

Features

- Compliant to HTM2030 and EN 15883/4
- Up to four scopes per cycle
- Short 20 minute cycle (dependent upon correct services)
- Tristel enzymatic detergent for pre-wash cycle
- Single-Use Tristel chlorine dioxide chemistry
- Bench top or free-standing
- Easy to install
- Compact, measuring 640mm x 640mm x 550mm
- Printer supplied for traceability
- Compatible with RO water
- Thermal self-disinfect cycles



ENT Scope Rack



Tristel Shine - ENT washer service requirements

COLD WATER: 1 x 3/4" BSP male 22mm Ø. @ 2.0 - 8.0 bar pressure, 10L/Min. Flow Rate

Note:

Incoming water should be softened water <50ppm 1 micron & .2 micron pre filtration required for non RO installations

RO WATER RO connection available (Option)
1 x 3/4" BSP male

DRAIN: 1 X Ø40 Trapped Up-stands.
20L/min. flow rate/drain.

ELECTRICS: 230-240 V a.c. 50 Hz 1-ph
1 x 13 amp (Washer)
1 x 13 amp (Printer)

DIMENSIONS: 642 mm Wide x 635 mm Deep x 566 mm High

Tristel Single-Use solutions available:-

1 x 5 Litres Detergent



1 x 5 Litres Base Solution



1 x 5 Litres Activator Solution

