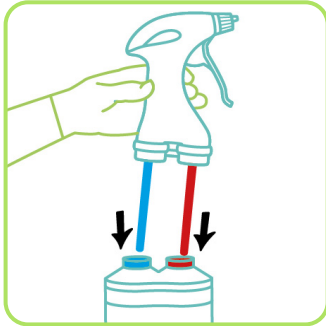
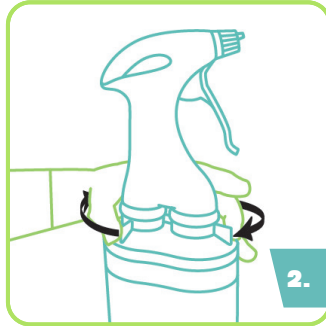


### CREATING SPORICIDAL SURFACE WIPES.



Assemble the JET bottle. Insert the blue tube into the blue capped bottle neck and the red tube into the red capped bottle neck.



Fasten the levers on each side of the trigger head to secure.



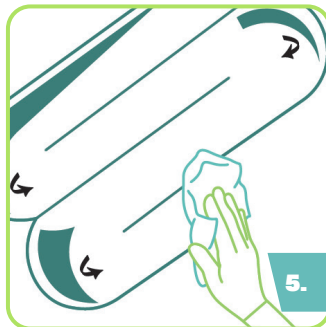
Ensure the JET spray nozzle is aligned to the top line on the trigger head.

JET is ready for use.



Hold JET upright and firmly squeeze the trigger to apply JET directly onto the surface, or onto a dry wipe.

**Note:** Two doses of JET will cover an area of 50cm x 20cm (0.1m<sup>2</sup>).



Wipe to cover the surface in foam.



Ensure all areas remain wet for the one-minute contact time. Leave to air dry.

#### NOTES:

- Use in conjunction with the product label, Safety Data Sheet (SDS) and device manufacturer's instructions.
- Disinfect hands and wear appropriate PPE (Personal Protective Equipment) when handling disinfectants and medical devices.
- Do not use if product is damaged.
- Do not use on soft metals such as brass or copper.
- For professional use only.
- Do not reuse the empty container. Dispose of empty container and used wipes in accordance to local health policies.
- Do not use on invasive medical devices or surgical equipment.



Refer to the User Guide for full instructions.

cache™